

Advantages:

- 01 SMD LED with Best Color Uniformity and High Brightness.
- 02 High Refresh Rate and High Grey Grade with Reliable Driving IC.
- 03 Best Power Supply of Meanwell PSU of CE,UL Approved.
- 04 Waterproof IP65 LED Cabinet Can be Customized according to your LED Display Size.
- 05 Low power consumption, metal cooling, no noise, long service life.

Note: For illustration purpose only! Not in actual size or detail

CHENKSE

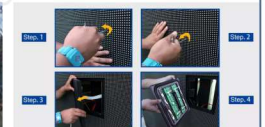
FIXED LED SCREEN OF50 OUTDOOR

LED DISPLAY MANUFACTURER
www.chenkse.com



TECHNICAL SPECIFICATIONS

Module Specifications	
Operating environment	Outdoor
Pixel pitch	5mm
Service type	Front Maintenance service
LED Lamp Model	SMD3535
Module Size (WxH)mm	320x160
Module Resolution(WxH)mm	64x32
Driving Mode	Constant drive
Scan Mode	1/8scan
Pixel configuration (R,G,B)	1R,1G,1B
Color temperature (K)	3200-9300
Grey scale/colors	256levels of each color(RGB)/16.7M colors
Cabinet Specifications	
Standard Cabinet Size(WxHxD)mm	1280X1280X130
Cabinet Resolution(WxH)mm	256X256
Cabinet Module Number	4PCS
IP Grade	IP65
Cabinet Weight(kg/m ²)	40
Cabinet Material	Iron cabinet
Best Viewing Distance(m)	5-100
Pixel Density (dots/m ²)	40000
Brightness(cd/m ²)	≥6000
Power Max Consumption (W/m ²)	≤800
Power Average Consumption (W/m ²)	450
View angle	H:160; V:160
Control host (CPU)	Pentium4 or above
Operating system	WIN98/2000/NT/XP
Control method	Synchronous display with control PC by DVI
Control System	Video, DVD, VCD, TV, picture, cartoon, graphics, texts.etc.
Display Content	Novastar
Interface definition	HUB75
Frame Frequency	≥60Hz
Refresh frequency	≥1920HZ / ≥3840HZ
Transmission Distance	Multi mode fiber <500m, single mode fiber <30km,internet cable
Working Voltage	AC220±10% 50Hz/AC110±10% 60Hz
Working Temperature	~40℃ ~ + 6 5 ℃
Humidity	10%-95%
Life Span Time	≥100000 hours
MTBF	≥5,000hours
Screen Plainness	< ±1mm
Blind Spot Rate	< 0.0001
Certificate	CE, RoHS



- Front Access
- Lightweight
- Slim
- Temp Monitoring
- Smoke Monitoring
- Voltage Monitoring
- Remote Control
- Easy To Install
- Wide Angle
- High Refresh Rate
- Transparent
- Noiseless
- Calibration
- Pixel Detection
- Fanless

