

STAGE LED SCREEN RS059 OUTDOOR

LED DISPLAY MANUFACTURER
www.chenkse.com



Cabinet

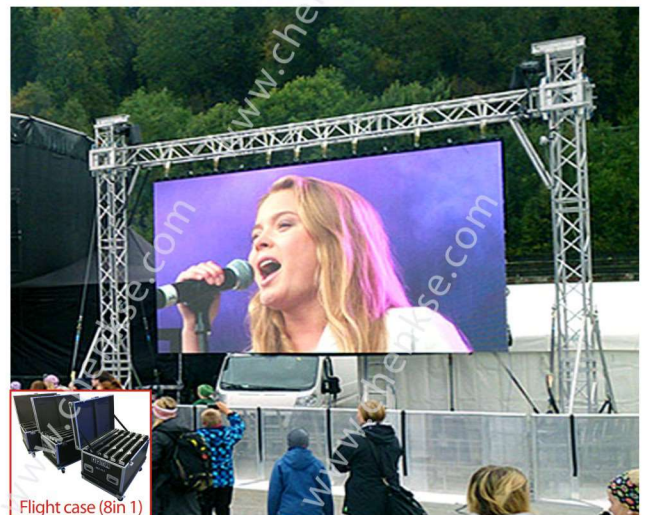
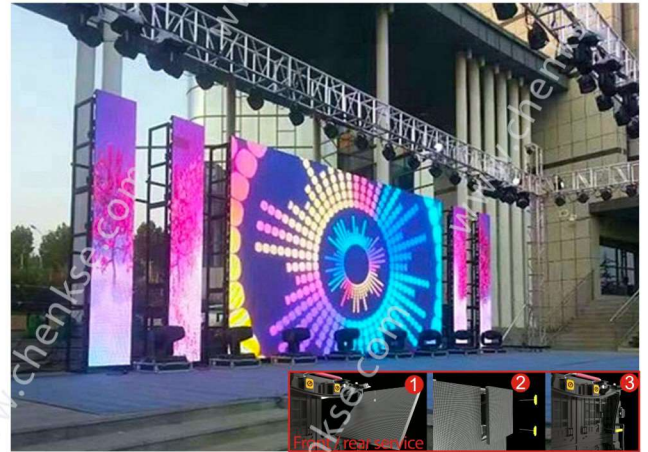


Module

- 01 Quick maintenance within **20 seconds**
- 02 Structure that facilitates **easy installation**
- 03 Aluminum structure with passive cooling and fanless design
- 04 Reinforced module structure suitable for continuous disassembly and installation
- 05 Production level calibration for best color uniformity
- 06 All models have **500x500mm** panel options
- 07 Strong structure supporting **+10 and -10 degree** curving

TECHNICAL SPECIFICATIONS

Module Specifications	
Operating environment	Outdoor
Pixel pitch	5.95mm
Service type	Front and rear access
LED Lamp Model	SMD1921
Module Size (WxH)mm	250X250
Module Resolution(WxH)mm	42X42
Driving Mode	Constant drive
Scan Mode	1/8scan
Pixel configuration (R,G,B)	1R,1G,1B
Color temperature (K)	3200-9300
Grey scale/colors	256levels of each color(RGB)/16.7M colors
Cabinet Specifications	
Standard Cabinet Size(WxHxD)mm	500X500X66
Cabinet Resolution(WxH)mm	84X84
Cabinet Module Number	4PCS
IP Grade	IP65
Cabinet Weight(kg/m²)	7.5
Cabinet Material	Die Casting Aluminum
Best Viewing Distance(m)	5.95-150
Pixel Density (dots/m²)	43264
Brightness(cd/m²)	≥6500
Power Max Consumption (W/m²)	≤900
Power Average Consumption (W/m²)	400
View angle	H:160;V:160
Control host (CPU)	Pentium4 or above
Operating system	WIN98/2000/NT/XP
Control method	Synchronous display with control PC by DVI
Control System	Video, DVD, VCD, TV, picture, cartoon, graphics, texts.etc.
Display Content	Novastar
Interface definition	HUB75
Frame Frequency	≥60Hz
Refresh frequency	≥3840HZ
Transmission Distance	Multi mode fiber <500m, single mode fiber <30km,internet cable
Working Voltage	AC220±10% 50Hz/AC110±10% 60Hz
Working Temperature	~40℃ ~ +60℃
Humidity	10%-95%
Life Span Time	≥100000 hours
MTBF	≥5,000hours
Screen Plainness	< ±1mm
Blind Spot Rate	< 0.0001
Certificate	CE, RoHS, FCC



1. Panel dimensions can change upon customer request
2. That value is the remain capacity of PSU's at 100% brightness and white color content
3. Different types of video input available as option
4. Available LED options are CREE [CR], NICHIA [NC], EVERLIGHT [EV], MULTICOLOR [MC], NATIONSTAR [NS]. Please check order code for details.

Front Access Lightweight Slim Temp Monitoring Smoke Monitoring Voltage Monitoring Remote Control Easy To Install Wide Angle High Refresh Rate Transparent Noiseless Calibration Pixel Detection Fanless

