

CHENKSE

STAGE LED SCREEN RS039 OUTDOOR

LED DISPLAY MANUFACTURER

www.chenkse.com



Cabinet



Module

- 01 Quick maintenance within 20 seconds
- 02 Structure that facilitates easy installation
- 03 Aluminum structure with passive cooling and fanless design
- 04 Reinforced module structure suitable for continuous disassembly and installation
- 05 Production level calibration for best color uniformity
- 06 All models have 500x500mm panel options
- 07 Strong structure supporting +10 and -10 degree curving

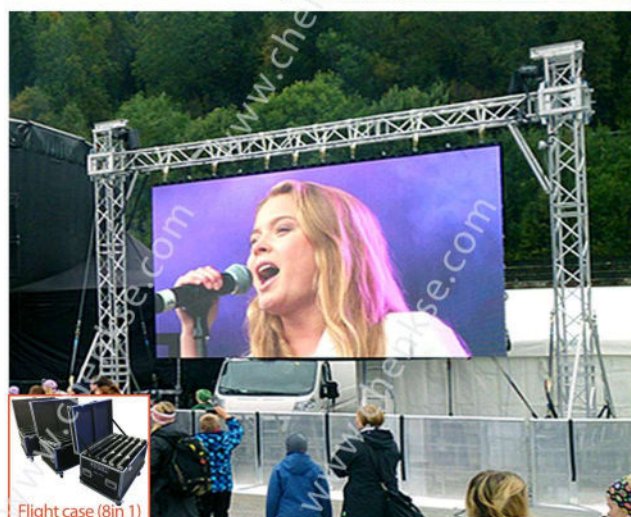
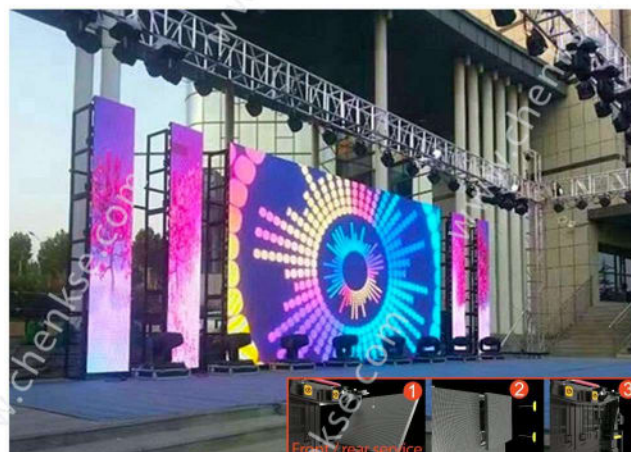
TECHNICAL SPECIFICATIONS

Module Specifications

Operating environment	Outdoor
Pixel pitch	3.91mm
Service type	Front and rear access
LED Lamp Model	SMD1921
Module Size (WxH)mm	250X250
Module Resolution(WxH)mm	64X64
Driving Mode	ICN2153s
Scan Mode	1/16scan
Pixel configuration (R,G,B)	1R,1G,1B
Color temperature (K)	3200-9300
Grey scale/colors	256levels of each color(RGB)/16.7M colors

Cabinet Specifications

Standard Cabinet Size(WxHxD)mm	500X500X66 / 500X1000X66
Cabinet Resolution(WxH)mm	128X128 / 128X256
Cabinet Module Number	4PCS / 8PCS
IP Grade	IP65
Cabinet Weight(kg/m²)	7.5 / 13
Cabinet Material	Die Casting Aluminum
Best Viewing Distance(m)	3.5-100
Pixel Density (dots/m²)	65410
Brightness(cd/m²)	≥6500
Power Max Consumption (W/m²)	≤800
Power Average Consumption (W/m²)	400
View angle	H:160; V:160
Control host (CPU)	Pentium4 or above
Operating system	WIN98/2000/NT/XP
Control method	Synchronous display with control PC, by DVI
Control System	Video, DVD, VCD, TV, picture, cartoon, graphics, texts.etc.
Display Content	Novastar
Interface definition	HUB75
Frame Frequency	≥60Hz
Refresh frequency	≥3840HZ
Transmission Distance	Multi mode fiber <500m, single mode fiber <30km, internet cable
Working Voltage	AC220±10% 50Hz/AC110±10% 60Hz
Working Temperature	~40℃ ~ +60℃
Humidity	10%-95%
Life Span Time	≥100000 hours
MTBF	≥5,000hours
Screen Plainness	< ±1mm
Blind Spot Rate	< 0.0001
Certificate	CE, RoHS, FCC



1. Panel dimensions can change upon customer request
2. That value is the remain capacity of PSU's at 100% brightness and white color content
3. Different types of video input available as option
4. Available LED options are CREE [CR], NICHIA [NC], EVERLIGHT [EV], MULTICOLOR [MC], NATIONSTAR [NS]. Please check order code for details.

Front Access Lightweight Slim Temp Monitoring Smoke Monitoring Voltage Monitoring Remote Control Easy To Install Wide Angle High Refresh Rate Transparent Noiseless Calibration Pixel Detection Fanless



Apron Teknoloji AS. reserves the right to change any product specification, discontinue of any product or services without prior notice